

# QUALITY CARE PLAT

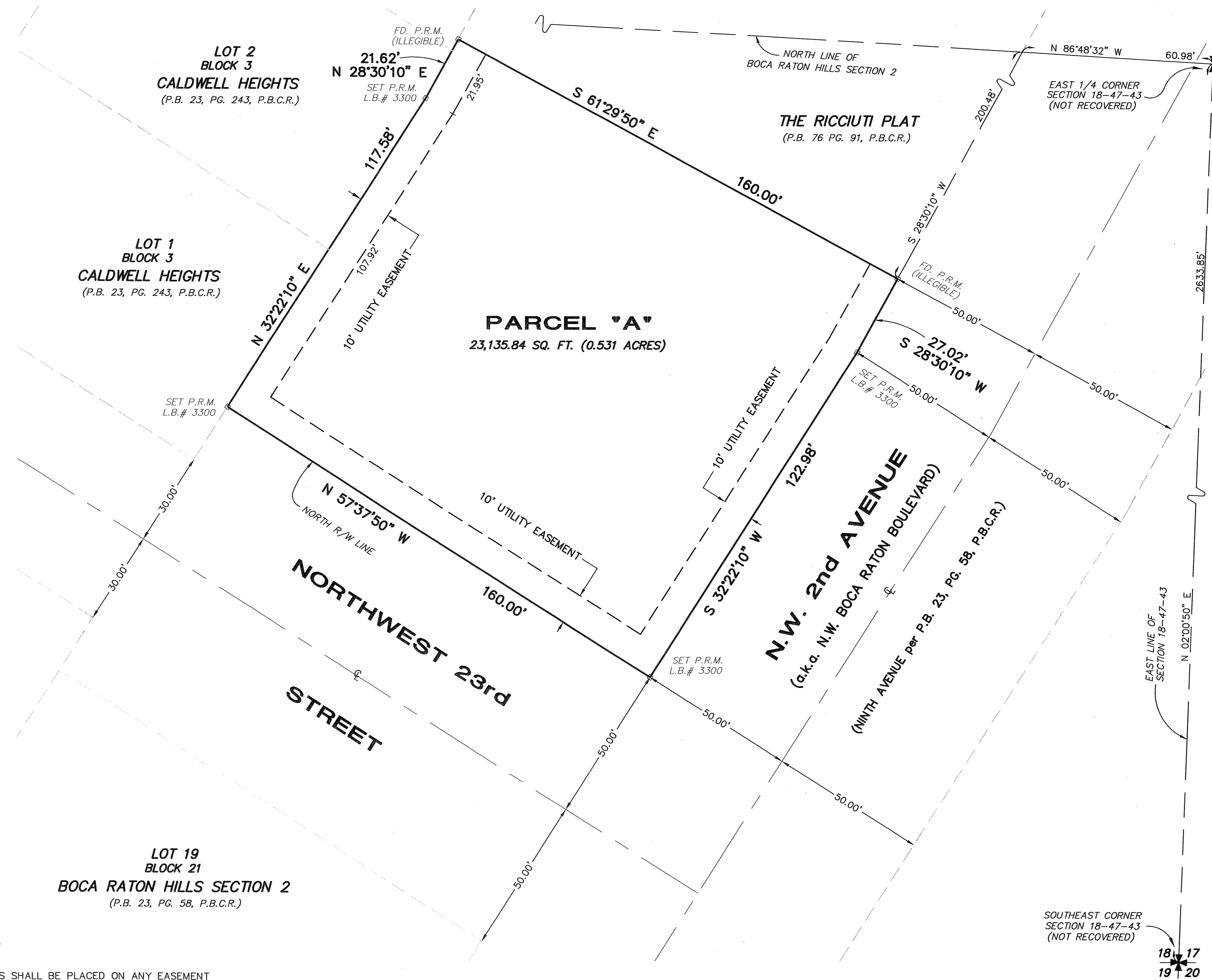
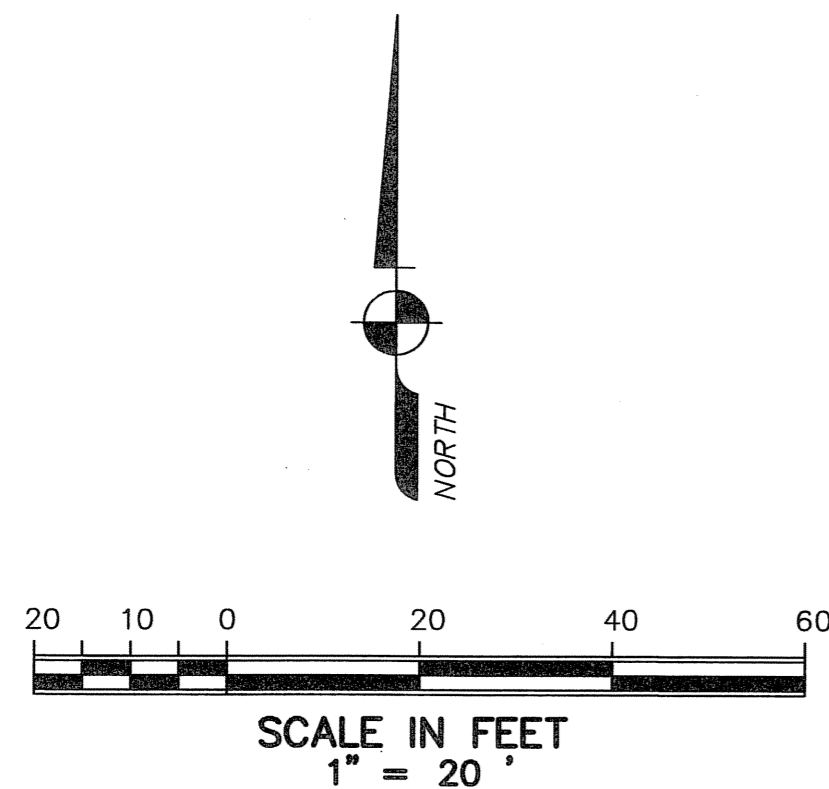
A REPLAT OF A PORTION OF LOT 20, BLOCK 21, BOCA RATON HILLS SECTION 2, RECORDED IN PLAT BOOK 23, PAGE 58 OF THE PUBLIC RECORDS OF PALM BEACH COUNTY, FLORIDA BEING IN THE SOUTHEAST 1/4 OF SECTION 18, TOWNSHIP 47 SOUTH, RANGE 43 EAST, THE CITY OF BOCA RATON, PALM BEACH COUNTY, FLORIDA.

199

STATE OF FLORIDA  
COUNTY OF PALM BEACH  
This plat was filed for record at \_\_\_\_\_ this \_\_\_\_\_ day of \_\_\_\_\_, 2005, and duly recorded in Plat Book \_\_\_\_\_, Pages \_\_\_\_\_, through \_\_\_\_\_.

SHARON R. BOCK  
Clerk & Comptroller  
By: \_\_\_\_\_

SHEET 2 OF 2



AREA TABULATION:  
PARCEL A = 23,135.84 S.F. 0.531 ACRES

**SURVEYOR'S NOTES:**

- NO BUILDINGS OR ANY KIND OF CONSTRUCTION OR TREES OR SHRUBS SHALL BE PLACED ON ANY EASEMENT WITHOUT PRIOR WRITTEN APPROVAL OF ALL EASEMENT BENEFICIARIES AND ALL APPLICABLE CITY APPROVALS OR PERMITS AS REQUIRED FOR SUCH ENCROACHMENTS.
- BEARINGS SHOWN HEREON ARE ASSUMED BASED ON THE NORTH RIGHT-OF-WAY LINE OF NORTHWEST 23rd STREET, HAVING A BEARING OF N 57°37'50" W.
- BUILDING SETBACK LINES SHALL BE AS REQUIRED BY CURRENT CITY OF BOCA RATON ZONING REGULATIONS.
- IN INSTANCE WHERE DRAINAGE AND UTILITY EASEMENTS INTERSECT, CONSTRUCTION, OPERATION, AND MAINTENANCE OF DRAINAGE WITHIN THESE AREA OF INTERSECTION SHALL NOT INTERFERE WITH THE CONSTRUCTION, OPERATION, AND MAINTENANCE OF UTILITY FACILITIES.
- DIMENSIONS SHOWN HEREON ARE IN FEET AND DECIMAL PARTS THEREOF AND ARE BASED ON THE DEFINITION OF FOOT AS ADOPTED BY THE UNITED STATES BUREAU OF STANDARDS AND REFER TO THE HORIZONTAL PLANE.
- THE SECTION TIES AS SHOWN HEREON ARE CALCULATED AND REFERENCED TO THE RICCIUTI PLAT, AS RECORDED IN PLAT BOOK 76, PAGE 91 OF THE PUBLIC RECORDS OF PALM BEACH COUNTY, FLORIDA.
- ABBREVIATION LEGEND: C= CENTERLINE; FD.= FOUND; L.B.= LICENSED BUSINESS; N.V.A.= NON-VEHICULAR ACCESS; O.R.B.= OFFICIAL RECORDS BOOK; P.L.S.= PROFESSIONAL PROFESSIONAL LAND SURVEYOR; P.B.= PLAT BOOK; P.B.C.R.= PALM BEACH COUNTY RECORDS; PG.= PAGE; P.R.M.= PERMANENT REFERENCE MONUMENT (CONCRETE MONUMENT WITH BRASS DISK); R/W= RIGHT-OF-WAY.

**SYMBOL LEGEND:**

- INDICATES SET 4" X 4" X 24" CONCRETE PERMANENT REFERENCE MONUMENT (P.R.M.) WITH BRASS DISK STAMPED L.B.# 3300.
- INDICATES SET NAIL WITH DISC STAMPED L.B.# 3300 (UNLESS OTHERWISE NOTED).

**NOTICE:**

THIS PLAT, AS RECORDED IN ITS GRAPHIC FORM, IS THE OFFICIAL DEPICTION OF THE SUBDIVIDED LANDS DESCRIBED HEREIN AND WILL IN NO CIRCUMSTANCES BE SUPPLANTED IN AUTHORITY BY ANY OTHER GRAPHIC OR DIGITAL FORM OF THE PLAT. THERE MAY BE ADDITIONAL RESTRICTIONS THAT ARE NOT RECORDED ON THIS PLAT THAT MAY BE FOUND IN THE PUBLIC RECORDS OF PALM BEACH COUNTY.

THIS INSTRUMENT WAS PREPARED BY:  
KEITH M. CHEE-A-TOW, P.L.S.  
**AVIROM & ASSOCIATES, INC.**  
SURVEYING & MAPPING  
50 S.W. 2nd AVENUE, SUITE 102  
BOCA RATON, FLORIDA 33432  
(561) 392-2594  
OCTOBER, 2004